

2021_Hallgatói

2021_Angol Végzett Hallgatók (21_AVÉGHALL)
Válaszadók száma = 201

Felmérés eredmények

Jelmagyarázat

Kérdésszöveg

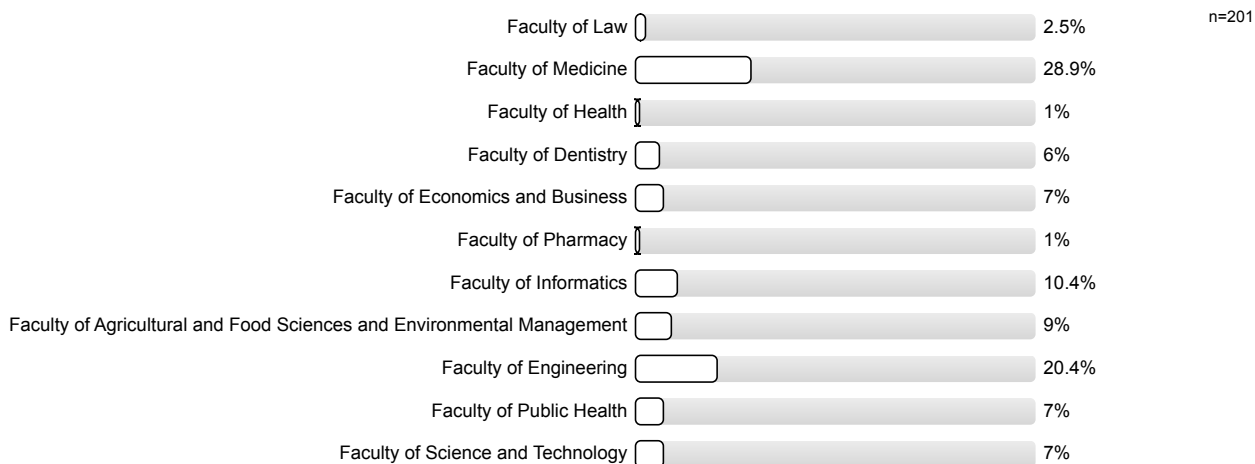


1. General questions

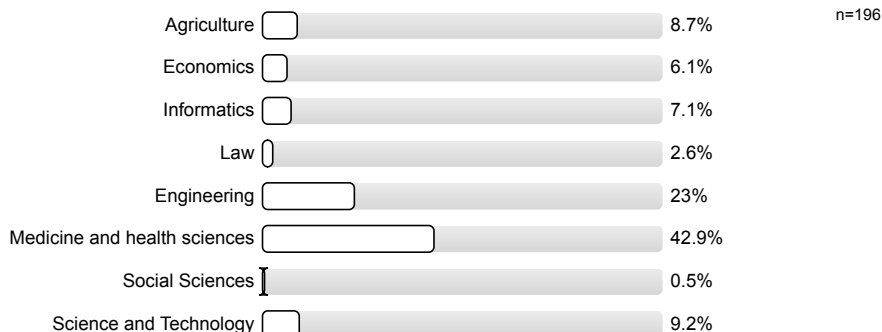
1.1) Sex:



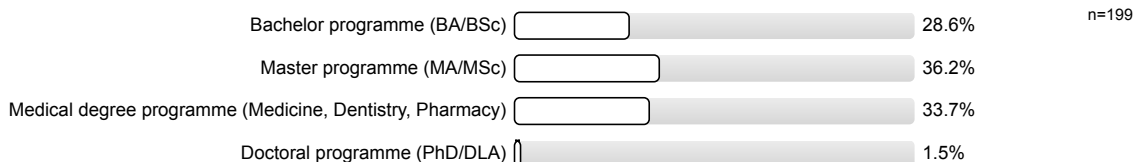
1.2) Which faculty of UD were you studying at? (If you were doing more than one training programme simultaneously, choose the one you found the most important.)



1.3) What was the field of study of your major(s)? (If you were doing more than one training programme simultaneously, choose the one you found the most important.)



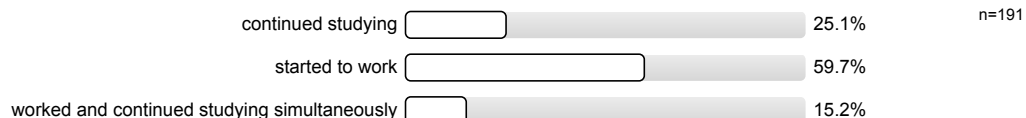
1.4) What is the level of your training programme?



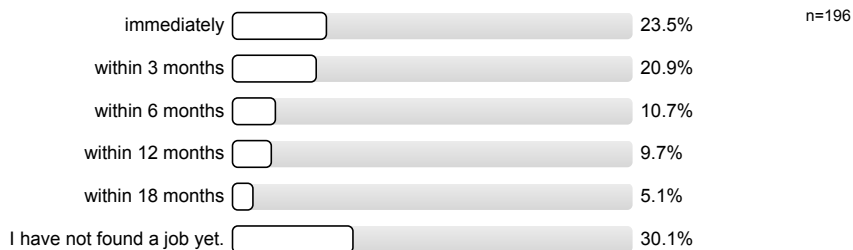
1.5) In which year did you finish your studies?



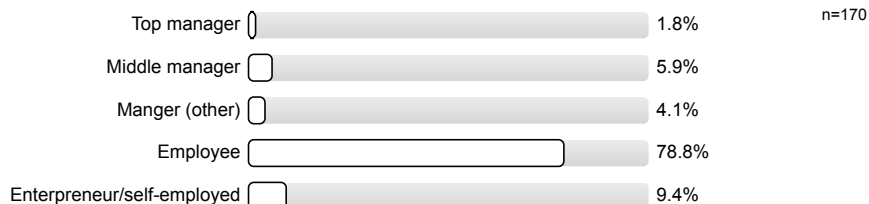
1.6) After finishing your studies you...



1.7) After graduating from UD, how long did it take you to secure your first paying job?



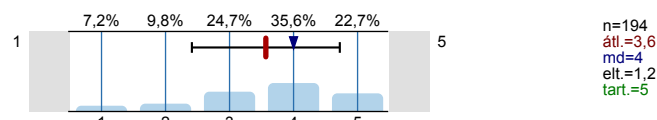
1.8) In what position do you work at your present/last company? (If you had more than one, please indicate the last one.)



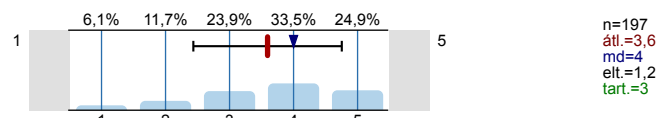
2. Development of work-related competencies

Please rate the extent to which your education at UD contributed to the development of the following competencies? (1=not at all; 3=to some extent, 5=to a great extent; 0=no opinion)

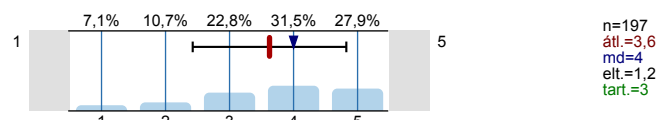
2.1) Proactive problem solving

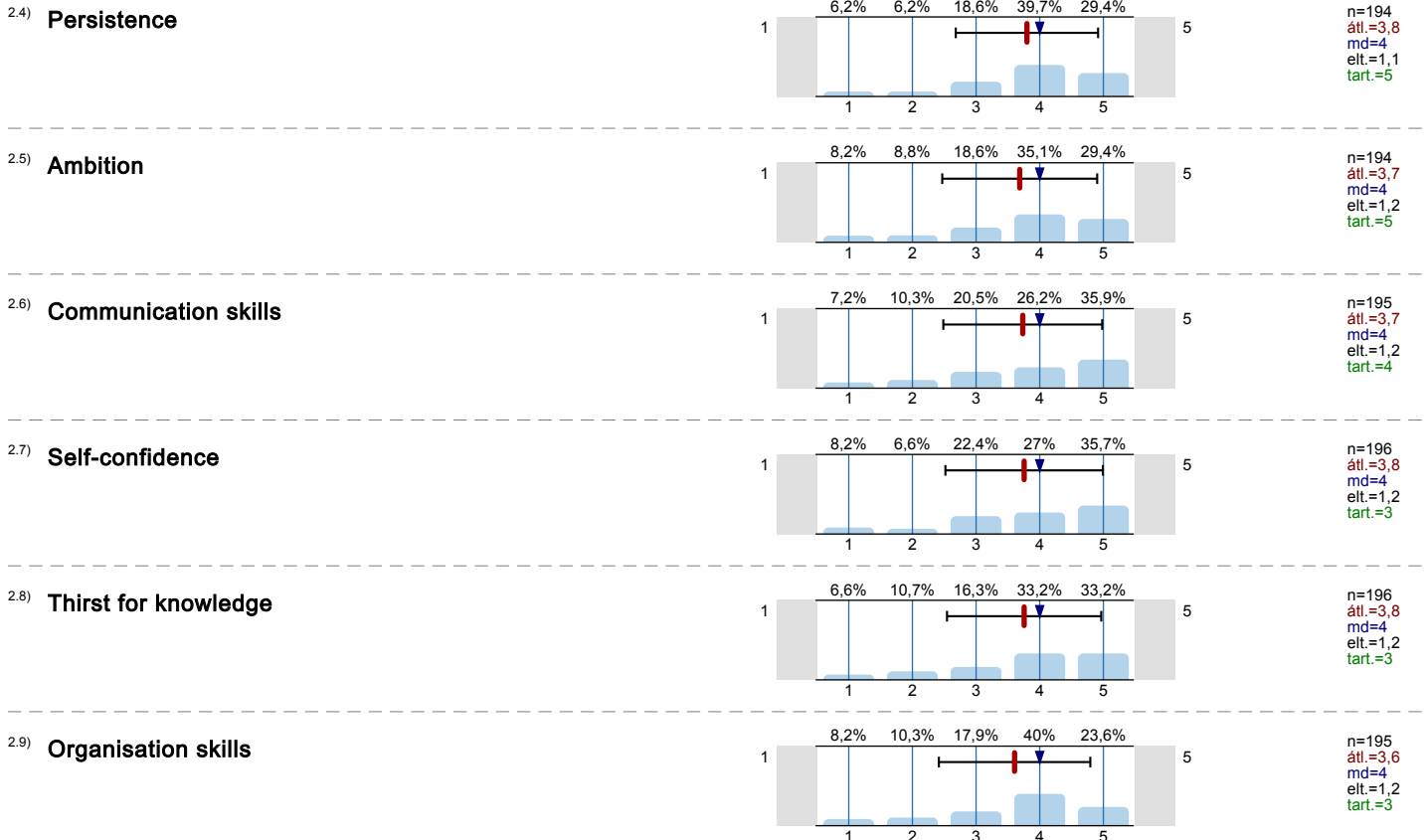


2.2) Aim for perfection



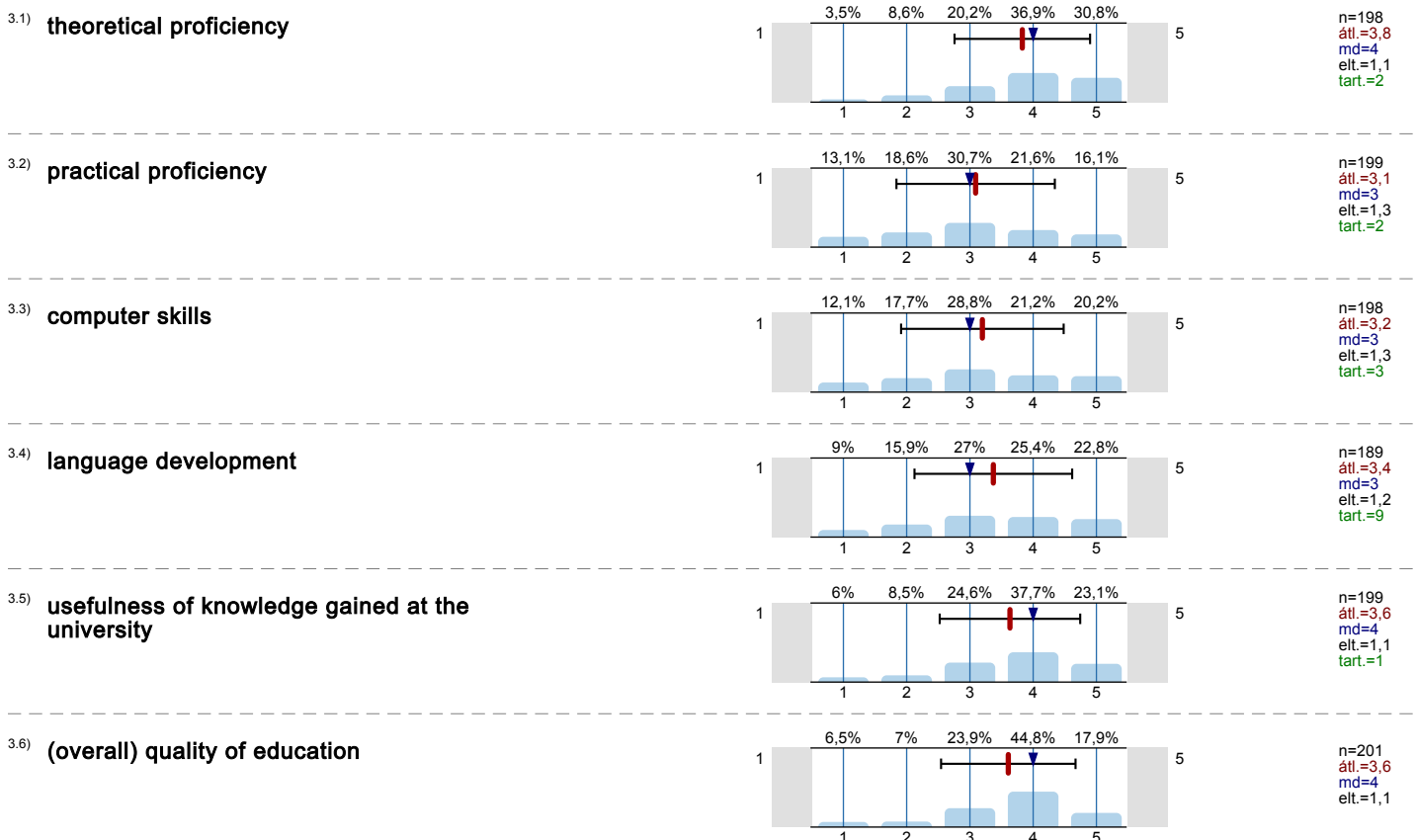
2.3) Teamwork





3. Satisfaction with the development of skills and knowledge

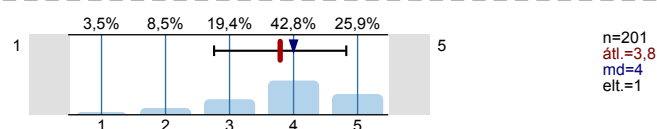
Please rate how satisfied you are with the development of the following skills and knowledge at your faculty. (1= not satisfied at all; 2=not satisfied; 3=somewhat satisfied; 4=satisfied; 5 = absolutely satisfied; 0=no opinion)



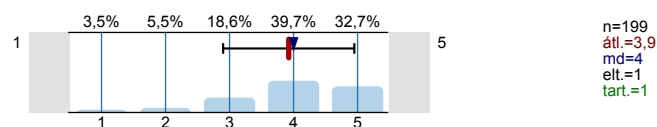
4. Infrastructure

Please rate how satisfied you are with the following things. (1= not satisfied at all; 2=not satisfied; 3=somewhat satisfied; 4=rather satisfied; 5 = absolutely satisfied; 0=no opinion)

4.1) equipment and facilities of education



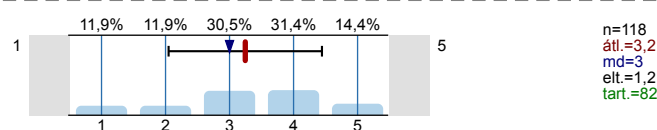
4.2) appearance and physical conditions of buildings



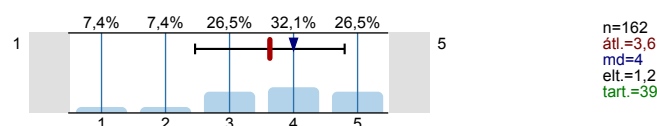
5. Services

Please rate how satisfied you are with the following services. (1= not satisfied at all; 2=not satisfied; 3=somewhat satisfied; 4=rather satisfied; 5 = absolutely satisfied; 0=no opinion)

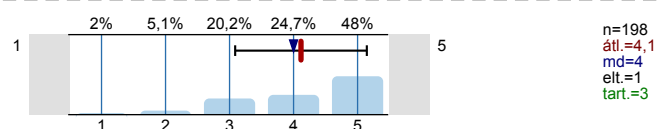
5.1) Dorm-related services



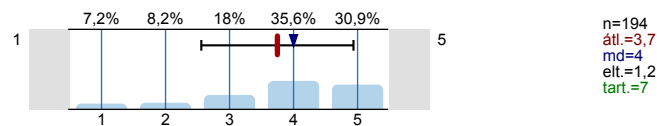
5.2) Sports-related services



5.3) Student Service Centre/ Education Office/ International Office/Coordinating Centre for International Education



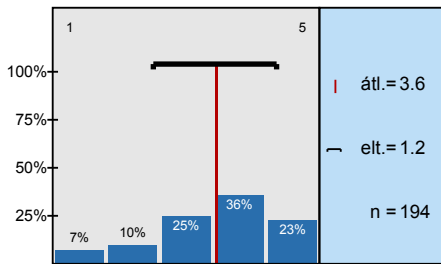
5.4) Department/Institute Administration



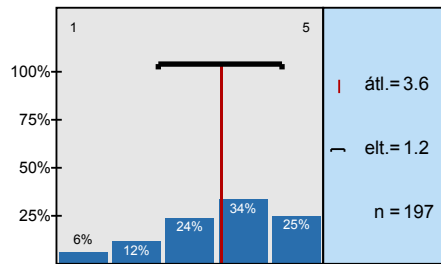
Thank you for completing our survey! You can submit your answers by clicking on "Send."
Saving your data may take a few seconds depending on Internet speed. Please wait for the message verifying that your data is saved.

Hisztogram skálázott kérdésekhez

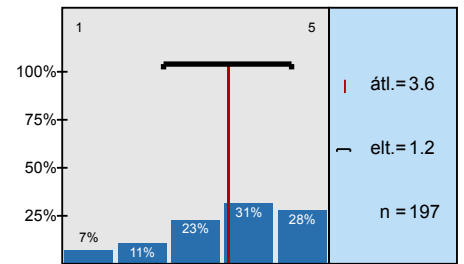
Proactive problem solving



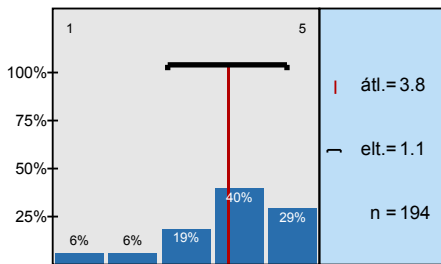
Aim for perfection



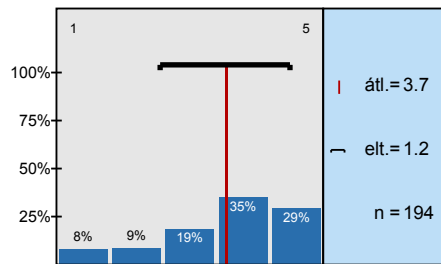
Teamwork



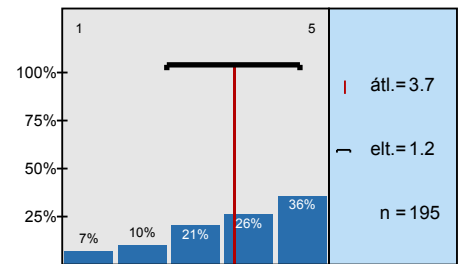
Persistence



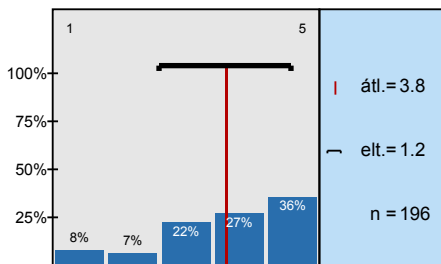
Ambition



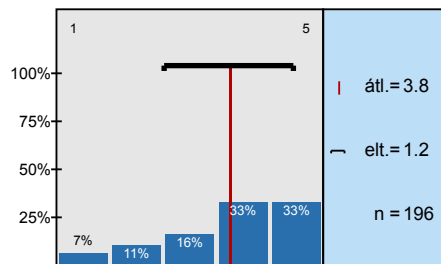
Communication skills



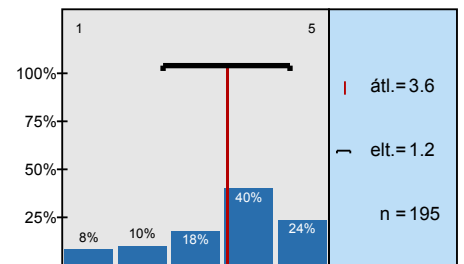
Self-confidence



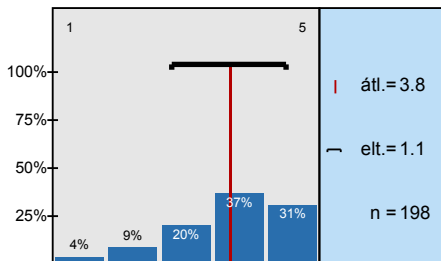
Thirst for knowledge



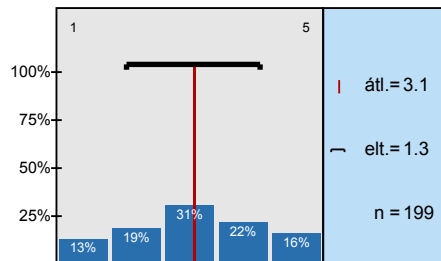
Organisation skills



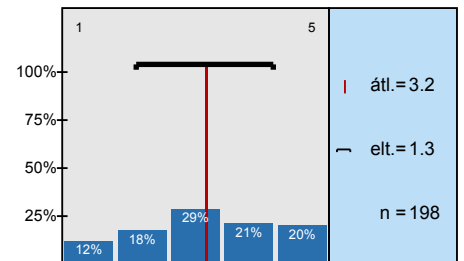
theoretical proficiency



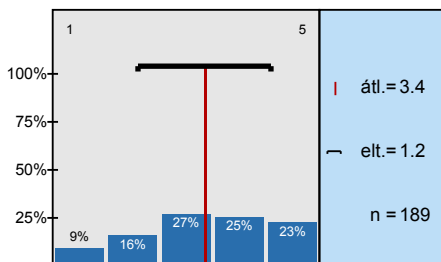
practical proficiency



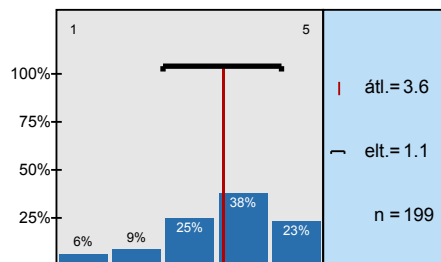
computer skills



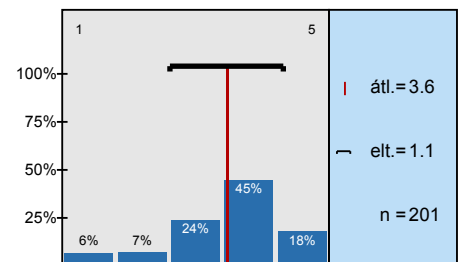
language development



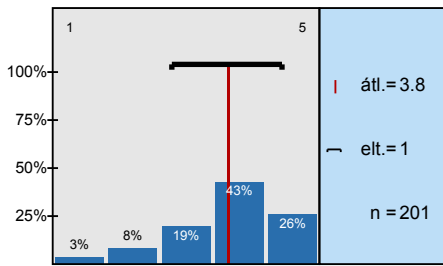
usefulness of knowledge gained at the university



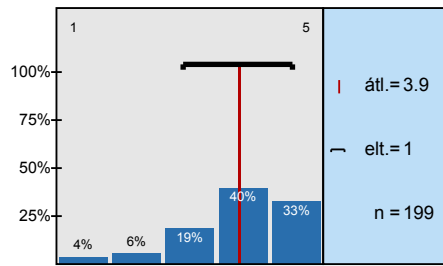
(overall) quality of education



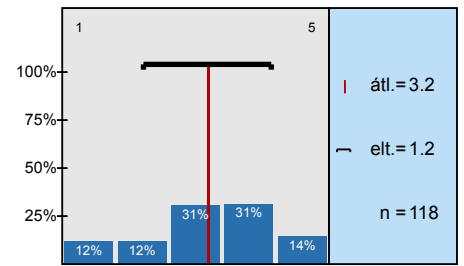
equipment and facilities of education



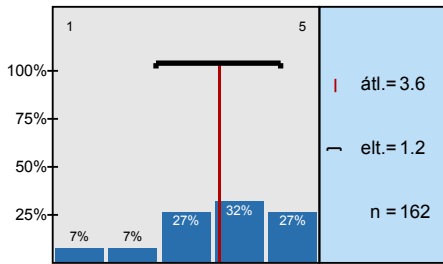
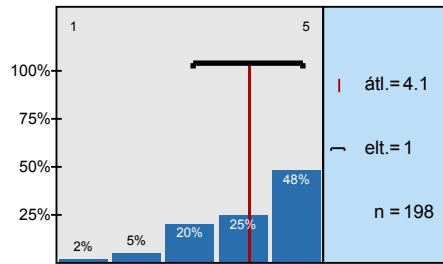
appearance and physical conditions of buildings



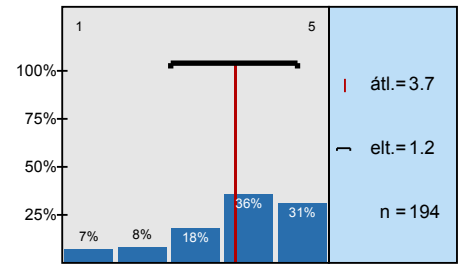
Dorm-related services



Sports-related services

Student Service Centre/ Education Office/
International Office/Coordinating Centre for

Department/Institute Administration

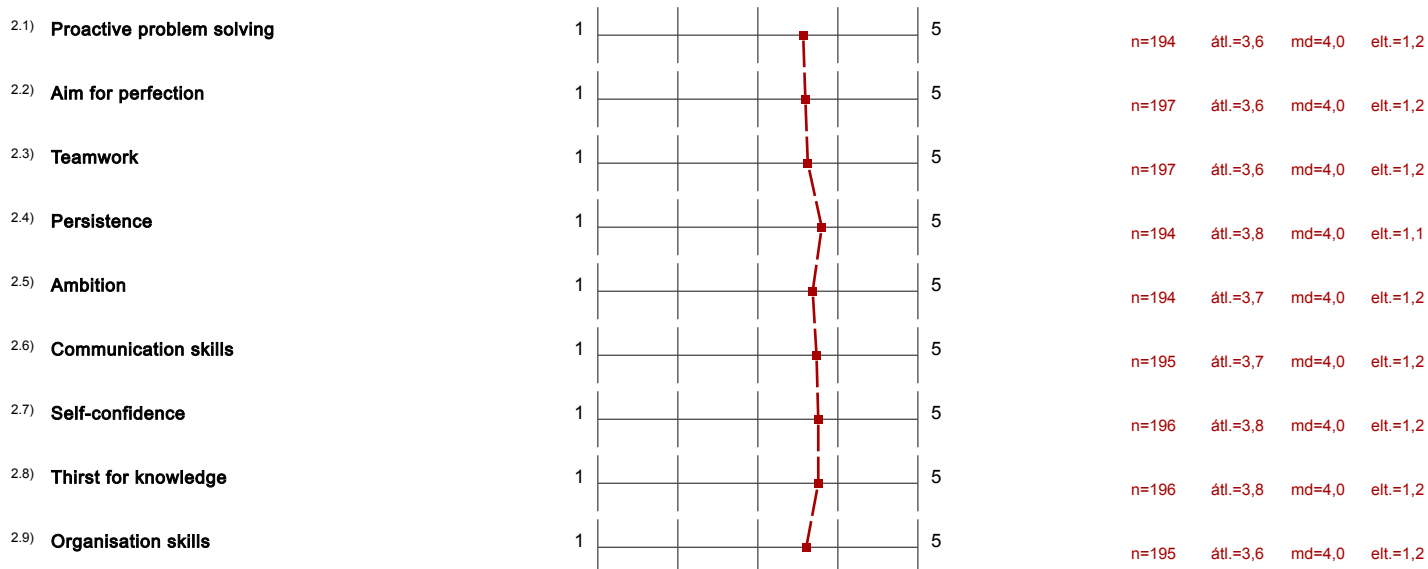


Profil

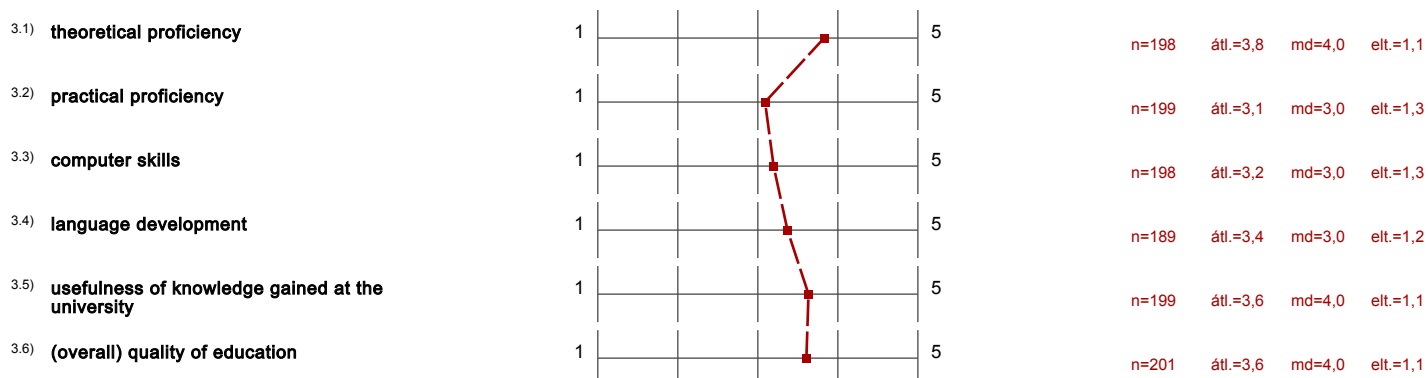
Alegység: DPR - mérések
 Tanár neve: 2021_Hallgatói
 Kurzus neve: 2021_Angol Végzett Hallgatók
 (A felmérés neve)

A profilvonalban használt értékek Átlag

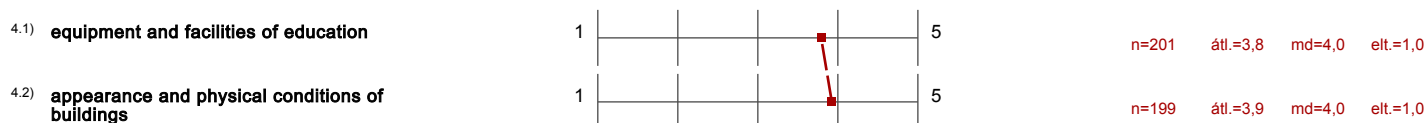
2. Development of work-related competencies



3. Satisfaction with the development of skills and knowledge



4. Infrastructure



5. Services

5.1) Dorm-related services	1					5	n=118	átl.=3,2	md=3,0	elt.=1,2
5.2) Sports-related services	1					5	n=162	átl.=3,6	md=4,0	elt.=1,2
5.3) Student Service Centre/ Education Office/ International Office/Coordinating Centre for International Education	1					5	n=198	átl.=4,1	md=4,0	elt.=1,0
5.4) Department/Institute Administration	1					5	n=194	átl.=3,7	md=4,0	elt.=1,2